

CITY OF KELOWNA

BYLAW NO. 9330

Road Closure and Removal of Highway Dedication Bylaw **A Portion of Abbott Street adjacent** **to 2406 and 2415 Abbott Street**

A bylaw pursuant to Section 40 of the Community Charter to authorize the City to permanently close and remove the highway dedication of a portion of highway being a portion of Abbott Street adjacent to 2406 and 2416 Abbott Street.

NOW THEREFORE, the Municipal Council of the City of Kelowna, in open meeting assembled, hereby enacts as follows:

1. That portion of highway attached as Schedule "A" comprising that portion of Abbott Street shown in bold black as Parcel A and Parcel B on the Reference Plan prepared by Linden E. Fritsch, B.C.L.S., Fritsch Land Surveying Inc. and completed on 31st day of January, 2005, is hereby stopped up and closed to traffic and the highway dedication removed.
2. The Mayor and City Clerk of the City of Kelowna are hereby authorized to execute such conveyances, titles, survey plans, forms and other documents on behalf of the said City as may be necessary for the purposes aforesaid and to affix the Corporate Seal of the said City thereto.

Read a first, second and third time by the Municipal Council this day of , 2005.

Adopted by the Municipal Council of the City of Kelowna this day of , 2005

Mayor

City Clerk

**REFERENCE PLAN TO ACCOMPANY CITY OF
KELOWNA BYLAW NO. 9330, CLOSING ROAD
& CANCELLING THE DEDICATION OF HIGHWAY,
DEDICATED BY PLANS 2813 & B6339,
ALL OF D.L. 14, ODYD.**

Pursuant To Section 120 Of The Land Title Act.
And Section 40 Of The Community Charter

PLAN KAP

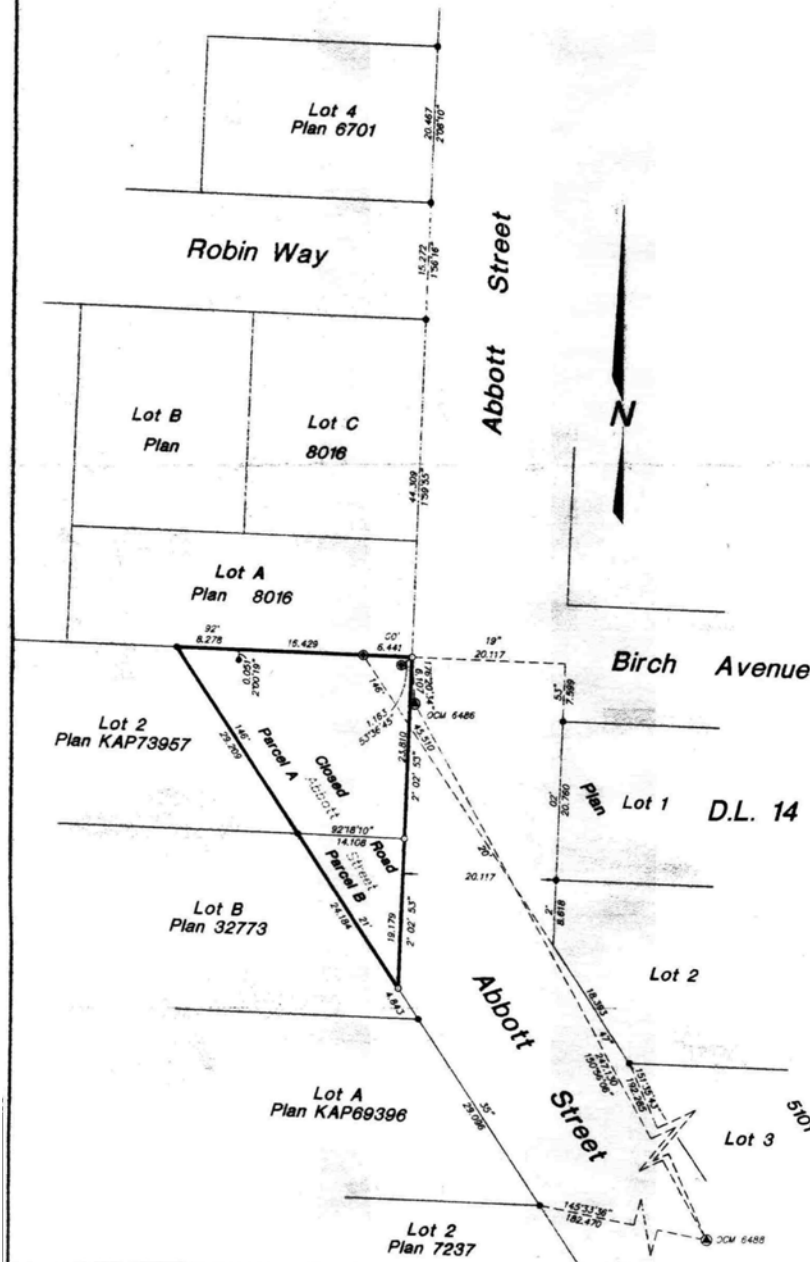
Deposited in the Land Title Office at Kamloops, B.C.
this day of 20

REGISTRAR

BCGS 82E.083



Scale 1:400 Metric



Book Of Reference

Parcel	Legal Description	Area
Parcel A	Closed Road D.L. 14, ODYD.	537.8 m ²
Parcel B	Closed Road D.L. 14, ODYD.	138.1 m ²

LEGEND:

- Control Monument
- Non-Standard Iron Post Found
- Standard Iron Post Found
- Standard Iron Post Set

Distances shown are in metres and decimals thereof.

Integrated Survey Area No. 4 – City of Kelowna.
M4083(CORS)

Old Bearings are derived from observations between
geodetic control monuments 6486 & 6488.

This plan shows horizontal ground-level distances
except where otherwise noted. To compute grid
distances, multiply ground-level distances by combined
factor 0.9999436.

This Plan Lies Within The Regional District
of Central Okanagan.

I, Linden E. Fritsch, a British Columbia Land Surveyor
of the City of Kelowna, in British Columbia, certify
that I was present at and personally supervised
the survey represented by this plan, and that the
survey and plan are correct. The field survey was
completed on the 7th day of January, 2005.
The plan was completed and checked, and the
checkered filed under # 26891, on the 31st
day of January, 2005.

[Signature]
BRITISH COLUMBIA LAND SURVEYOR

Fritsch Land Surveying Inc.
British Columbia & Canada Land Surveyors
#202 - 588 Leon Avenue
Kelowna B.C., V1Y 6J6

(250) 762-0122

05-001(202,50)